



## Easter in Milford

Now here's something completely different for Easter. The community-minded people at the Milford Baptist Church have teamed up with Murray Hill at the Milford Business Assn to create an innovative Easter Art Walk through the Milford town centre.

So what is it? Starting at Milford Mini Mart (next to Schnauers lawyers), there will be 11 wonderful colour copies of famous pieces of art depicting the events that happened over the Easter period in biblical times. Carry on up the street and you will find all 11 pictures in sequence leading up to Jesus being nailed to the cross and ending with his resurrection. These pictures will be on display from 10 to 16 April. After you have seen them, you're invited to the Baptist Church in Dodson Ave to sit quietly, pray, chat or pick up a sheet which explains something about each piece. The church will be open each day from 9am till 7pm. Enjoy the Easter journey!



**THE LAST SUPPER** By Leonardo da Vinci

Created during the period 1495-98, Leonardo da Vinci's mural painting known as *The Last Supper* illustrates the scene from the last days of Jesus Christ, as described in the Gospel of John 13:21. Flanked by his twelve apostles, Jesus has just declared that one of them will betray him. ("Verily I say unto you: one of you will betray me.") The picture depicts the reaction of each disciple to the news.

Bible Reference: Gospel of John, chapter 13, verses 18 – 31

THOUGHT: Jesus will never betray you

## **MRA's AGM – for your diary**

**Tuesday, 16 May 2017, 7.30pm at St Paul's Church, Otakau Road, Milford.**

Our local fire crew will be the guest speakers. Come along for plenty of stories, information and advice.

## MRA Movie Night

### Sunday, 14 May @ Berkeley Cinema Takapuna

### From 5.45pm for a prompt 6.30pm start

It's been a while since we held a Movie Night – November 2015 actually – and we thought it was time for another Milford social get-together. Our chosen movie is Viceroy's House.

Tickets \$25. Includes one drink and nibbles. Contact [glenys@milford.org.nz](mailto:glenys@milford.org.nz) to order.

The End of an Empire. The Birth of Two Nations.  
Based on a True Story.

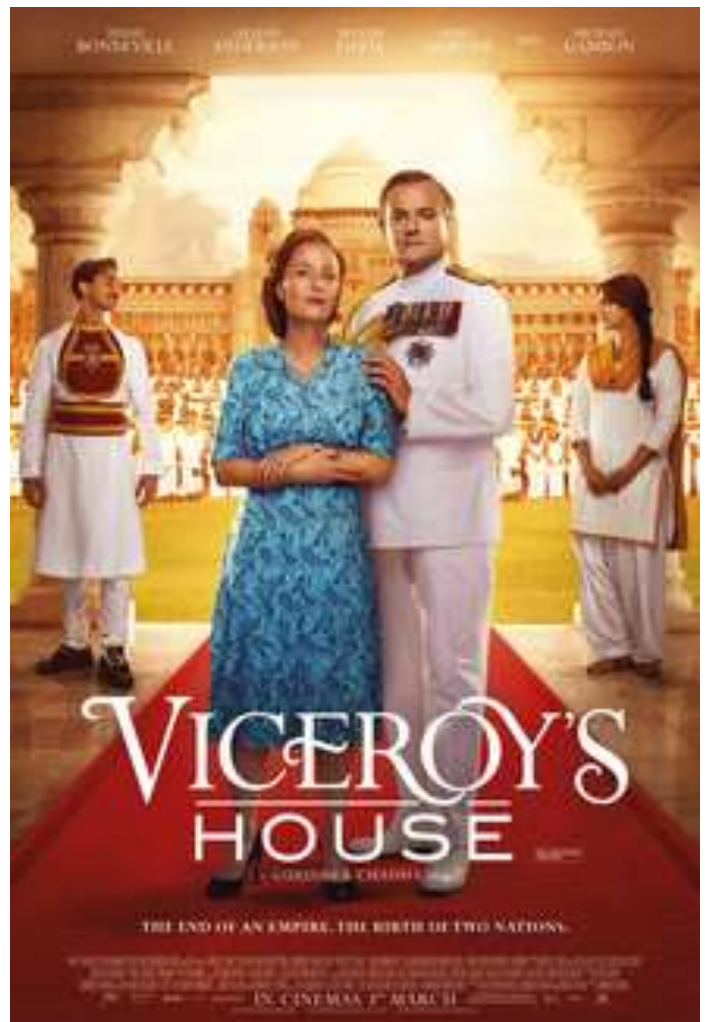
Starring Gillian Anderson, Hugh Bonneville.

Viceroy's House in Delhi was the home of the British rulers of India. After 300 years, that rule was coming to an end. For 6 months in 1947, Lord Mountbatten, great grandson of Queen Victoria, assumed the post of the last Viceroy, charged with handing India back to its people.

The film's story unfolds within that great House. Upstairs lived Mountbatten together with his wife Edwina and daughter (Lily Travers); downstairs lived their 500 Hindu, Muslim and Sikh servants.

As the political elite - Nehru, Jinnah and Gandhi - converged on the House to wrangle over the birth of independent India, conflict erupted. A decision was taken to divide the country and create a new Muslim homeland: Pakistan. It was a decision whose consequences reverberate to this day.

The film is deeply personal to the director Gurinder Chadha, whose own family was caught up in the tragic events that unfolded as British rule came to an end. Her film examines those events through the prism of a marriage - that of Dickie and Edwina Mountbatten - and a romance - that between a young Hindu servant, Jeet (Manish Dayal), and his intended Muslim bride, Aalia (Huma Qureshi). The young lovers find themselves caught up in the seismic end of Empire, in conflict with the Mountbattens and with their own communities, but never ever giving up hope...



## 2017/2018 Auckland Council Budget and local board 3- year agreement submission

Submissions closed on the Annual Budget and Local Board 3-year agreement on 27 March.

This was an opportunity to influence our Board's spending priorities for projects in and around Milford for the next three years. The Milford Centre Plan was completed in 2015 and contains both goals and action points aimed at making Milford a better place to live.

We were delighted that a good number of members responded to our request for ideas and comments. We used those responses as the basis for MRA's submission. Email us if you want to read the submission [chairs@milford.org.nz](mailto:chairs@milford.org.nz) or use the link in the covering email for this newsletter.

### Wairau Estuary – the Clean-up before the Storm

This was held for an hour on the evening of Thursday 2 March. We had about 25 volunteers.

There was not as much rubbish collected this time around, no doubt because of the great job our volunteers did in the first cleanup last year. We concentrated this time on the mangrove on the creek banks from East Coast Rd bridge to the middle of Omana Rd behind the Mall. Two people did pick up rubbish from the creek bed itself.

We had students from Carmel and Westlake Girls, a contingency from the Milford Baptist Church and other volunteers. It was a lovely sunny afternoon and one hour was ample time to collect a bag of rubbish. Once again we used the Sustainable Coastline bags and gloves. The rubbish was mainly plastic bottles, plastic bags and polystyrene. There were a few tyres found in the mud, but they were too deeply buried for us to pull out.

Many thanks to those people who volunteered. What wasn't collected was probably washed out to sea the following weekend!

**Discount Bins & Skips kindly supported Milford.  
Please support them next time you need a bin.  
0800 300 666**

We are hugely grateful to Discount Bins & Skips, a local business, that provided our clean-up bin free of charge. They supply bins sized from 3 cubic metres to 9 cubic metres. 7 DAY prompt, reliable service. We hope you will contact them next time you need a bin.

### Milford Reserve Playground Renewal

As you may have seen in the *North Shore Times*, the Council is updating the very tired playground at Milford Reserve. Playground design experts were engaged and there is a tilt to the history of the Reserve with a pirate shippe, 'flotsam and jetsam' theme to the design. Work is expected to start in the next couple of weeks.



## Help keep Milford clean and tidy & report those leaks

While walking/biking/driving around Milford, from time to time, you may notice something that is not right.

This could be graffiti, rubbish bags discarded in public places, vegetation obstructing the footpath, leaking water mains, sewerage smells from drains or something else that needs attention.

To report these to Auckland Council for repair and clean up, you need to have a few minutes spare. But, unless we community members report these problems, they do not go away.

The Auckland Council phone is 09 301 0101. (You need to wait to speak to an operator.) We recommend you don't try to phone at 9am on Monday mornings or there will likely be a long delay. Later in the day and later in the week are good guidelines when phoning the Council.

Once you have made your report, please ensure they send you a Reference Number. This is handy if you need to call back again.

### Illegal parking, broken footpaths, vegetation obstructing footpaths

**Auckland Transport** have a separate number, where you can call regarding parking infringements such as cars persistently parked over the footpath. This is a common problem as some people think that, if the road is a little narrow, they are allowed to park on the footpath so their wing mirrors are not in danger of being knocked by other cars (yes, this is a real response). This view is incorrect as parking on the footpath attracts a \$40 fine. Other things that can be reported to AT are broken footpaths and vegetation overhanging the footpath.

Alternatively, you can visit AT's website [www.at.govt.nz](http://www.at.govt.nz) and complete an online form. This also enables you to attach a photograph.

**Leaking water mains or sewage smells** can be reported to 442-2222 Press 1 or

[www.watercare.co.nz](http://www.watercare.co.nz)

Or you can email [faults@water.co.nz](mailto:faults@water.co.nz).

**Graffiti** will be cleared by the Council:

1. If it is on public property.
2. The service is available to residential properties but only to those that have tagging on a wall, fence structure or garage which is adjacent to the road.
3. Similarly, it is available to small business properties that have tagging on a wall, fence, structure or garage door which is adjacent to the road.

#### **SUMMARY:**

Auckland Council 301 0101

[www.aucklandcouncil.govt.nz](http://www.aucklandcouncil.govt.nz)

Auckland Transport 355 3553

[www.at.govt.nz](http://www.at.govt.nz)

Watercare 442 2222

[www.watercare.co.nz](http://www.watercare.co.nz)

[faults@water.co.nz](mailto:faults@water.co.nz)

Milford Beach Storm 1930s. Ref: T0356, North Auckland Research Centre.

